

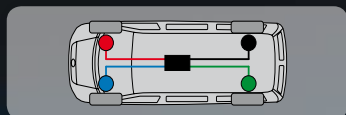


# VB-FULLAIR 4C

making everyday smoother



air suspension



- Increased comfort • Better driveability • More safety



## MERCEDES-BENZ G-CLASS

>1990

FRONT AND REAR AXLE

PRODUCT SHEET

# PRODUCT SHEET

The Mercedes-Benz G-Class is available with a full 4-corner air suspension system for the front and rear axle. The G-Class is an ideal candidate for the use of air suspension systems. Our VB-FullAir 4C air suspension system is not just available for new vehicles, it can also be mounted in used vehicles.

## VB-FullAir steering

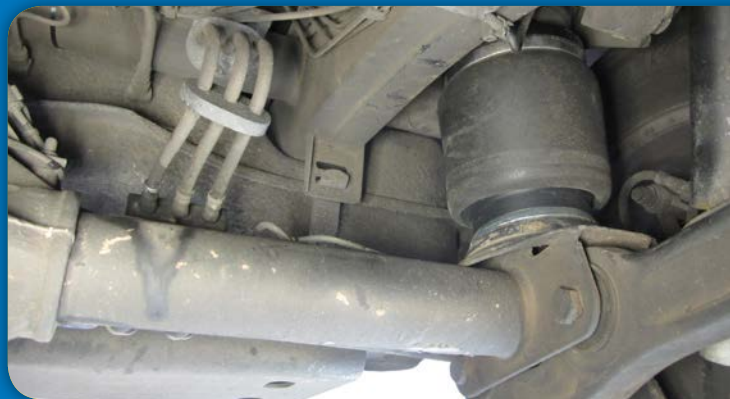
The VB-FullAir system comes with an electronic control unit called VB-ASCU (VB-Air Suspension Control Unit). This unit automatically monitors and corrects the vehicle's ride height. This ongoing process of monitoring and correction – which is unaffected by the load being transported – ensures safer vehicle handling and increases comfort.

## Software

The electronic control unit is compatible with the vehicle electronics and ESC system of the Mercedes-Benz G-Class. Thanks to the range of different software variants, the VB-FullAir system can be adapted to specific vehicle applications. The use of the Internet helps to provide support across the globe.

## Changing the height

The entry/loading platform height can be raised or lowered when the vehicle is at a standstill, allowing passengers to comfortably enter and exit the vehicle and goods to be conveniently loaded and unloaded.



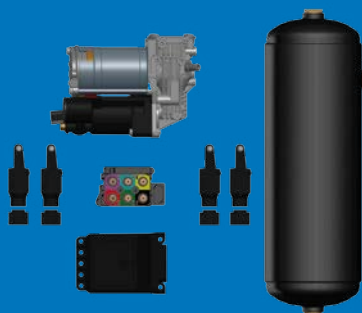
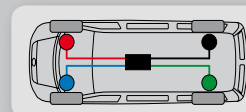
## Benefits of VB-FullAir:

- Constant ride height
- Increased comfort
- Better driveability
- Increased stability
- Comfortable transportation of passengers
- Kneeling function for allowing passengers to enter and exit the vehicle
- Better protection for fragile/delicate goods
- Kneeling function for loading and unloading goods
- Less wear on tyres/brakes
- More environmentally friendly, lower CO<sup>2</sup> emissions
- Spare wheel remains under the vehicle



## Available VB-FullAir options

- Memory
- Parking \*
- AutoLevel (level-ground) \*
- Offroad \*
- Tilt function (water tank) \*
- Sport \*
- Ferry \*
- Garage \*



## Applications

The VB-FullAir system can be used for a wide range of situations and applications:

- Ambulances
- Car transporters
- Commercial vehicles
- Motorhomes
- Animal transport
- Offroad vehicles
- Transportation of passengers
- Emergency rescue vehicles
- Wheelchair accessible vehicles
- Service vehicles

Dealer:

## Delivery and maintenance

The VB-FullAir system for the G-Class can be supplied and maintained by the VB dealer network as well as the official Mercedes-Benz dealer organisation.

The VB-FullAir system is low-maintenance and your VB dealer can advise you of any maintenance that your vehicle requires.

## Important

Installation may only be carried out by specially trained and authorized VB 'Mercedes-Benz G-Class' Partners. Ask your account manager about the options.

VB-FullAir	front axle	rear axle
Highest position	+60 mm	+40 mm
Lowest position	-65 mm	-75 mm
OffRoad	+35 mm	+20 mm
CarPark	-65 mm	-75 mm
Sport *	-25 mm	-35 mm

\* depending on the version.  
dimensions are indicative and for information purposes only.